

750

SIMPLE INSTALLATION
LONG LIFE CYCLE_Memory Card
LDWS _Lane Departure Warning System
4.0 INCH IPS LCD
FORMAT FREE_Memory Card
AFR SYSTEM _Auto File Recovery
LOW POWER CONSUMPTION

USER QUICK START GUIDE

Thank you for purchasing product from HID Solution Co., Ltd.

Warranty and Support
Our official website is at <http://www.hidsolution.com>.
Get firmware updates and download the User Manual from our official website.
HID Solution makes no warranty, either implied or otherwise, as to sales activities, or the appropriateness thereof, other than those permitted by the company.

Copyright and Trademark
All the information contained in this Manual is protected under the Copyright Act.
HID Solution retains all rights to the program, which are protected under the Copyright Act.
This Manual was prepared on the basis of the current product specification, and the examples, tables and charts, illustrative images, detailed features of the product, and its hardware and software requirements may be subject to change without prior notice.

Product Overview
This product is an assistive device installed in automobiles to record driving video data.
Depending on the car's state or driving conditions, some features may not be supported. The device also does not guarantee all events are recorded. If an accident occurs due to a shock, which is too great to be detected by the built-in shock sensor, the accident may not be recorded.
The Warranty is issued at the time of purchase of the product and is not re-issued.

Equipment for Office Use (Class A) (Broadcasting and Communication Equipment for Office Use)
Sellers and Users must note that this equipment is for office use (Class A) and certified with a radio waves suitability registration, and the equipment is intended for use in areas other than homes.

1. Name of apparatus (model name) : 750 2. Name of certified company : HID Solution Co., Ltd.
3. Date of manufacture : Indicated on the packaging box. 4. Manufacturer/Country of origin : HID Solution Co., Ltd. / Republic of Korea

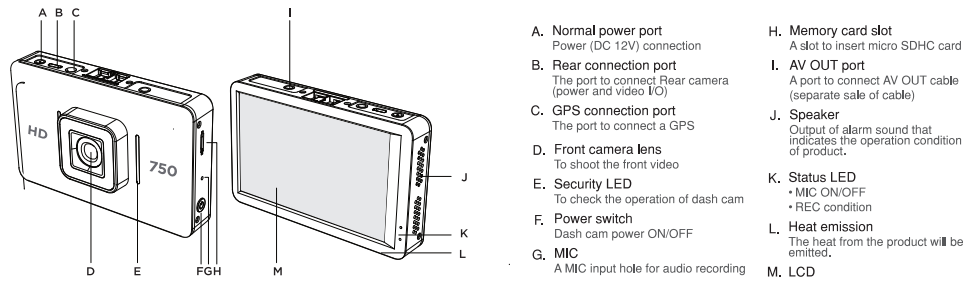
This equipment has been tested and found to comply with the limits for a Class A digital device, pursuant to part 15 of the FCC Rules. These limits are designed to provide reasonable protection against harmful interference when the equipment is operated in a commercial environment.
This equipment generates, uses and can radiate radio frequency energy and, if not installed and used in accordance with the instructions, may cause harmful interference to radio communications. Operation of this equipment in a residential area is likely to cause harmful interference in which case the user will be required to correct the interference at his own expense.
This unit was tested with shielded cables on the peripheral devices. Shielded cables must be used with the unit to insure compliance.



Any changes or modifications to the equipment not expressly approved by the party responsible for compliance could void your authority to operate the equipment.

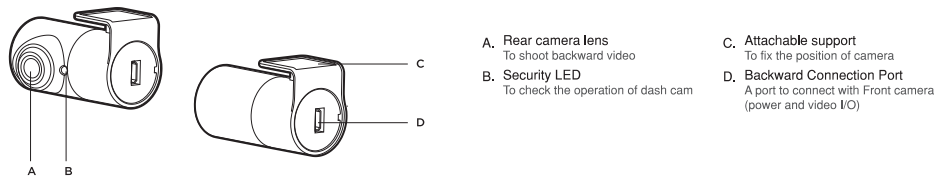
This device complies with part 15 of the FCC Rules. Operation is subject to the following two conditions:
1. This device may not cause harmful interference.
2. This device must accept any interference received, including interference that may cause undesired operation.

Part Name - Front Camera



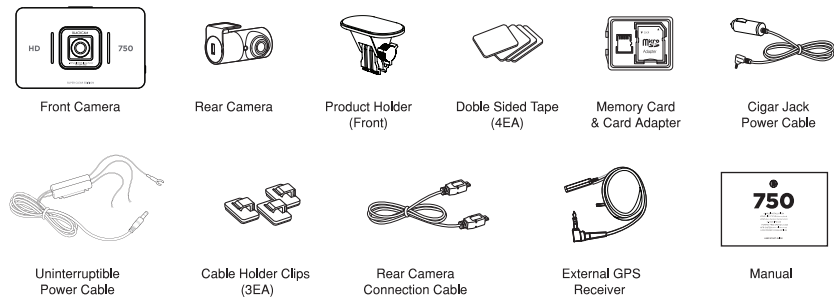
Part Name - Rear Camera

The terminal that connects the rear camera cannot be connected to any other device.
If micro USB cable except for rear only cable to rear connection port, it may cause the damage.



Package Components

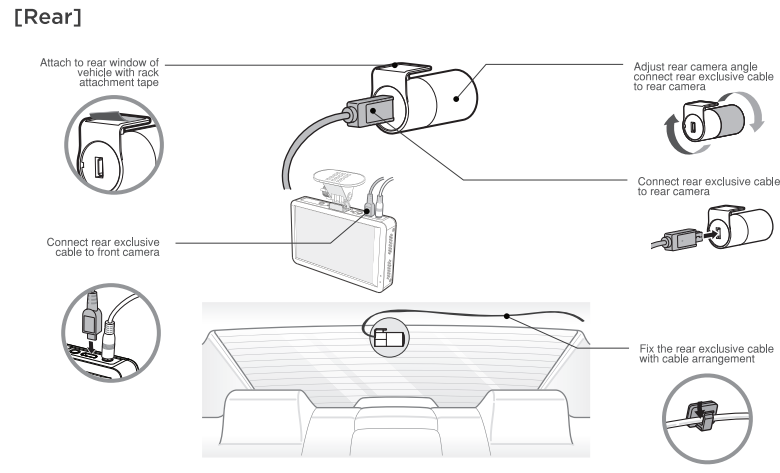
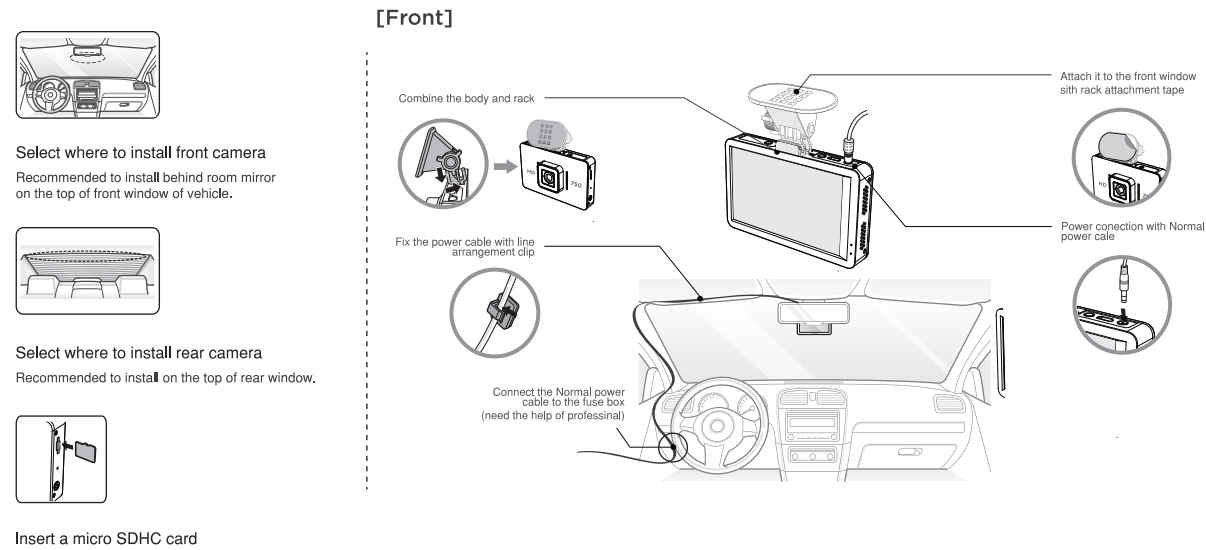
The components may be subject to change without prior notice to enhance the product's performance or quality.



※ Make sure to connect the package components using the authentic cables provided by HID Solution Co., Ltd.
Memory cards are consumable parts. They need be frequently replaced after being used for a long time.
(The company provides a warranty for 6 months after the date of purchase.)

Set-Up

The actual product may vary from the images shown.



Specifications

Item	Standard		Remarks
Model name	BCH-750		
Size/Weight	(F) 105 x 65 x 27mm, 100g / (R) 52 x 24 x 24mm, 25g		Weight not including cable and rack (Rear camera includes rack)
Support capacity	micro SDHC	16/32/64/128GB (up to 128GB)	MLC Class 10 & above
Recording method	Normal recording	(F) HD 720p@30fps (R) D1 480p@30fps	Recording per 1 minute unit
	Impact detection recording		5 sec before impact occurrence / 30sec, total 35 sec.
	Urgent recording		
	Parking recording (Recording when impact detection and motion detection)		5 sec before impact and motion detection occurrence / 30sec, total 35 sec.
Lens	HD wide angle lens		4 Glass with IR Cut filter (F/R)
Image sensor	High Quality CMOS Image Sensor		Front HD (movl valid pixel 1280x720) / Rear D1 (movl valid pixel 720x480)
View angle	(F) opposite angle 128 ° / horizontal 101 ° / vertical 80 ° (R) opposite angle 130 ° / horizontal 108 ° / vertical 80 °		
Video	HD wide angle lens		
Encoding	Image : MPEG-4 AVC / Voice : PCXM		AVI
Voice	Microphone embedded		
Speaker	Speaker embedded	8ohm	
Accelerator Sensor	3-axis	+2g / -2g	
Input power	DC 12V 3A		
Battery	Super capacity		Power supply to save video safely in case of shutdown of external power
Power consumption	MAX 4.5W		2ch,basis
Operating temp/ Storage temp.	Operating temp. -10 C ~ 60 C / Storage temp. -20 C ~ 70		
Interface	Normal power (POWER), rear camera (R-CAM), external GPS, image output (AV OUT) connection port		
Output method	NTSC		
Others	Security LED, Power On/Off, LDWS, Format Free		

Warranty

This product has been delivered for domestic use within the Republic of Korea after having passed strict quality management and inspection.
If any defect in workmanship or natural failure occurs during the warranty period, the company provides warranty service according to the information contained in the Warranty below.

Model Name			
Product Serial Number			
Warranty Period	Body	1 year	
	All accessories (consumables)	3 months / Memory card- 6 months (See the information contained in the Warranty)	
Date of purchase	year	month	day (Purchase Place :)

BLACKCAM CS/AS CENTER

1806 18F, DAERYUNG POST TOWER 5-CHA, DIGITAL-RO 9-GIL, GEUMCHEON-GU, SEOUL
☎ 82-1899-5448 blackcam@hidsolution.com
<http://www.hidsolution.com>

Starting the Product

[LIVE VIEW]

Urgent Recording Main Menu Microphone On/Off Live View

Front Camera Setting Rear Camera Setting Memory Setting
System Adjustment Playback Mode Setting Information

- When booting, you can select one from Front / Rear / PIP / Clock View
- For driving mode, you can select one from live view / LCD OFF (after 1 min. / after 3 min.)
- When you touch the area out of menu button on the bottom, it will be converted in the order of Front screen > Rear Screen > PIP > Clock Screen

[CONVERSION OF LIVE VIEW - Driving Mode]

[FRONT VIEW] [REAR VIEW] [PIP] [CLOCK VIEW]

Recording While Driving

Impact sensitivity can be set as [menu ▶ system adjustment ▶ sensitivity setting]

Normal recording
When booting is completed, it will be converted to Normal recording mode. The recorded file will be saved in normal folder in memory card.

Front, Rear Camera Setting

Resolution
Displays the recording resolution

Frame
Available to change the frame

Brightness
To adjust the brightness of image

Rear setting
- Record rear while parking
to support rear camera OFF function

Definition
Available to adjust the visibility of image

Contrast adjustment
To control the contrast of image

Night image brightness
To adjust the brightness of image at night

Mounting Location
Rear setting - mounting location
Available to set according to the location when installation

Resolution: 1280x720P 30fps

Brightness: ON

Record Rear while parking: ON

Diplay

LCD
To set the LCD OFF

LCD booting screen
To set the screen to be displayed when booting

Menu button
To set the menu button

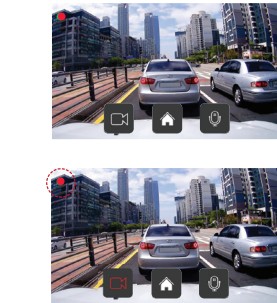
Touch calibration
To reset when the accuracy of touch falls down

Front LED
To set the front LED

Rear LED
To set the rear LED

Display: LCD, LCD Booting Screen, Menu Button, Front LED, Rear LED, Menu Button

Settings: OFF, PIP, Hiding, Blink, Blink, Touch calibration



Impact detection recording
When an impact is detected in normal recording mode, the mode will be converted to impact detection recording mode. Based on the point of impact occurrence, the video for total 35 seconds from before 5 seconds to after 30 seconds will be saved in event folder of memory card.

Recording While Parking



Parking mode
When you stop the vehicle (ACC power shutdown), the mode will be converted to Parking mode after 3 seconds, and when you start the engine again (ACC power connection), the mode will be converted to normal recording mode.

Impact detection recording
When impact is detected at parking detection mode, the detection recording starts (before 5 sec /after 30 sec, total 35 second). The recording file will be aved in event folder of memory card.

Motion detection recording
- When a motion is detected in the view range, the recording will start. (before 5 seconds / after 30 seconds, total 35 seconds)
- The recording file will be saved in parking folder of memory card.

Memory Setting

[menu ▶ memory setting] to change the setting
Micro SDHC card format – to format the activated memory card

For driving video, available to select the memory range according to operation environment of driver by dividing into Driving, Motion and Impact.

Memory Allocation	Memory Allocation	Memory Allocation	Memory Allocation	Memory Allocation	Memory Allocation
Type - A Driving : 20 Motion : 50 Event : 20	Type - B Driving : 20 Motion : 40 Event : 10	Type - C Driving : 30 Motion : 40 Event : 20	Type - D Driving : 40 Motion : 40 Event : 10	Type - E Driving : 50 Motion : 20 Event : 20	Type - F Driving : 50 Motion : 30 Event : 10

micro SDHC card saved

The range of video that is recorded by recording mode and storage folder are as follows.

Mode	Storage Time	Storage Folder Name
Resolution	Front : 1280 x 720p,30fps / Rear : 720 x 480p,30fps	
Driving Recording	Normal	Total 60 sec. Normal
	Impact Detection	Before 5 sec. / After 30 sec. Total 35 sec. Event
Parking Recording	Impact Detection	Before 5 sec. / After 30 sec. Total 35 sec. Event
	Motion Detection	Parking
Urgent Recording	Before 5 sec. / After 30 sec. Total 35 sec.	Camcorder

LDWS

[menu ▶ system adjustment ▶ LDWS] to adjust the alarm of lane departure warning system

LDWS Setting ON / OFF
Warning Sound Beep Sound
LDWS Speed 60km / 70km / 80km

Auto Setting
- For the first setting of LDWS, be sure to set the bonnet.
- After bonnet setting, the sensitivity setting will be proceeded automatically.
- After completed, automatically return to the previous page.
- In case of auto setting, it will take some time according to the condition of lane (within 5 seconds)

Manual setting
- Bonnet setting : sets the bonnet line of vehicle.
- Horizontal setting : sets the horizontal line.
- wheel location setting (left). Wheel setting (right) : adjusts sensitivity according to the wheel location (left/right)

*Note
- For LDWS function, auto setting is recommended.
- Easy to use as LDWS is connected with GPS
- As warning is not available according to ambient environment or weather, or there may be wrong warning, the cares of driver should be taken.
- For the safety, set after parking.
- For smooth setting, set in the place that lanes are seen visibly

Main Menu

Front camera setting
To change the setting of front camera

Rear camera setting
To change the setting of rear camera

Memory setting
To change the memory setting or format

Setting information
To check the current setting value

Live View
Return to Live view shooting mode

System adjustment
System adjustment speaker, low voltage/temperature block setting, display, sensitivity setting, tie setting, LDWS value adjustment etc

Playback mode
To check the recorded video

Front Camera Setting Rear Camera Setting Memory Setting
System Adjustment Playback Mode Setting Information

System Adjustment

Low voltage/temp. block setting
To change voltage setting, time setting and block temperature setting

Speaker
To change the volume of speaker

Display
To change the screen setting

LDWS
To set the lane departure alarm

Sensitivity setting
To set the function of parking motion, parking impact, driving impact sensibility.

Time setting
To set the time

System Adjustment Speaker Low voltage /Temperature Intercept Setting Display
Vol. Time Setting LDWS

Sensitivity Setting Time Setting LDWS

Low voltage /Temperature Intercept Setting Display
Voltage setting Time setting LCD Off Temperature Shutdown Temperature

Speaker
Vol. Time Setting LDWS

Display
LCD OFF PIP Hiding Blink Blink

LDWS
ON Beep 70km Automatic settings Manual settings

Sensitivity Setting
Parking shock sensitivity Driving Shock Sensitivity

Time setting
2016. 08. 16 PM 16:00 UTC+09:00 Seoul

Play Mode / Setting Information

Play Mode
[menu ▶ play mode] to check the recording videos

- 4 video lists for each page is displayed. Select the corresponding file and the corresponding recording video will be played.
- Press this button to move to next page
- Press this button to skip 3 pages
- Press this button to store the desired video separately

Press this button to play the previous or next file
Press this button to save the file in Myfolder
Press this button to convert forward/backward
Use the round button of play bar to move to the desired section

Setting Information
[menu ▶ setting information] to check the current setting status

- [menu ▶ setting information]available to initialize with basic setting value.
- When changing the basic setting value, the basic data will be deleted and rebooted.